



2023/2024

Catalog



VISURI

ReCARE®

Health is
our biggest
stimulus!



Visuri is the world's leading manufacturer of neuromuscular electrical stimulation technologies from the ICU to the outpatient setting.

Our company is part of Acsaint, a transnational economic group that controls 14 companies operating in more than 16 countries and complying with global quality standards.

Hence, we have business units in major cities around the world such as: London, Lisbon, Madrid, Dortmund, Milan, Dubai, Skopje, Hong-Kong, New York, São Paulo and Belo Horizonte.

For over a decade, Visuri is considered an impactful company that brings together the most current concepts and discoveries in Physics, Chemistry and Biology allied to electronics, mechanics and information technology to develop solutions that solve complex and previously supposedly unsolvable problems.

Our team is relentless when it comes to improving people's quality of life through technology applied to healthcare.

With extensive know-how in creating hardware, software, and firmware for mission-critical

applications, Visuri works with Machine Learning, Artificial Intelligence, Internet 5.0, Computer Vision, Internet of Things (IoT) and Embedded Computing System solutions.

All of this knowledge has made Visuri a reference in research and development of technology in the medical field, serving the largest and best hospitals, medical clinics, home care clinics and health professionals around the world.

We truly bridge scientific knowledge and high-impact innovations from Brazilian and international academia, to the hospital and ambulatory market.

Aside from developing partnerships with key research institutions globally, our R&D team is composed of renowned researchers and experts in the health research universe.

Research, innovation, continuous learning, and care for life are part of our DNA!

Health is our biggest stimulus!





Table of contents



Adult ICU
12 - 13



Pediatric ICU
14 - 15



Neurology
16 - 17



Vascular
18 - 19



Cardiology
20 - 21



Geriatrics
22 - 23



Oncology
23 - 24



Orthopedics
25 - 26



Pulmonology
27 - 28



Physiatry
29 - 30



Gastroenterology
31 - 32



Nutrology
33 - 34



Sports Medicine
34 - 35



Physiotherapy
36 - 37



Nursing care
38 - 39



Home Care
40 - 41

ReCARE[®] SNA - Multiclinics

World's NMES leader from the ICU
to the outpatient setting

**5.0 Hospital Medical Equipment, patented for
a multidisciplinary team.**



**ADVANCED
NEUROMUSCULAR
SUPPORT**

6 **in** **1**

**EARLY REHABILITATION
FOR CRITICALLY ILL
PATIENTS**



Smart diagnosis



**Prescription of
pre-programmed
treatment protocols
and remote update
of new protocols
via Internet of Things
(IoT)**



**Neuromuscular Electrical Stimulation
(NMES):
Advanced, Full Body (WB-EMS)**

High power: From 0 mA to 240 mA
Pulse Width: From 10 us to 10,000 us
Frequency: From 1 Hz to 100 Hz



**Horizontal
monitoring**



**Cloud data storage
(via IoT)**



**Remote management
of clinical cases**



ICU Version



ReCARE® Trolley Version

Especially adapted for Intensive Care Units (ICU)

Articulated Arm

The ReCARE® System has an articulated arm that takes the electrostimulation channels close to the sites to be treated, in order to facilitate the positioning of the electrodes throughout the patient's body and minimize the contact of the cables with the skin.

Transportation trolley

The ReCARE® system is integrated into a transportation trolley, a basket to accommodate accessories and castors with brakes, which allow the use and mobilization of the entire system between beds in an easy, agile, and safe way.



Outpatient Version



ReCARE® in portable version

Especially adapted for outpatient and home care

Compact version

The compact version is easily transported without risk of falling or damage. It has the same functionalities as the UTI version, such as diagnostics, pre-programmed protocols, IOT, horizontal monitoring and much more!

Carrying case with wheels

Especially developed to facilitate the transport of ReCARE® safely.



Screens

ADVANCED
NEUROMUSCULAR
SUPPORT



PROFESSIONAL MODULE

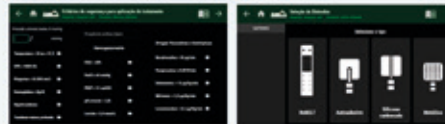


Pre-programmed
treatment protocols

Electrodiagnosis

Prevention of muscle
weakness and atrophy

EXPERT MODULE



Safety settings for
the application of
treatments

Electrode selection

DISCOVER EXCLUSIVE **ReCARE® ACCESSORIES**

ReBELT

FAST ATTACHMENT AND AUTOCLAVABLE ELECTRODE SYSTEM

Modular system for rehabilitation, consisting of a carbon silicone electrode inserted in an adjustable, quick-connect hypoallergenic silicone strap. Developed to simply and safely deliver the evoked activation of a greater number of muscle bundles.

ANVISA Registration Number: 80832479005



RePEN

Motor point detection pen that allows you to find the most suitable areas for delivering stimuli. It allows performing the electrodiagnostic stimulus test to diagnose polyneuropathies and disorders in muscle excitability.



Electroconductive gel applicator

It allows precise application of conductive gel on the electrodes.



ReCARE[®] SNA - ADULT ICU



THE ONLY EQUIPMENT WITH ANVISA AND INMETRO
CERTIFICATION FOR ICU IN BRAZIL





Treatment protocols:



Smart diagnosis



Peripheral circulation improvement



Locomotor muscles strengthening



Pressure ulcers' incidence reducing



Respiratory and diaphragmatic muscles strengthening



Pain relief



Muscle atrophy prevention and recovery



ReCARE[®] SNA - PEDIATRIC ICU



THE ONLY EQUIPMENT WITH ANVISA AND INMETRO
CERTIFICATION FOR ICU IN BRAZIL





Treatment protocols:



Smart diagnosis



Peripheral circulation improvement



Locomotor muscles strengthening



Pressure ulcers' incidence reducing



Respiratory and diaphragmatic muscles strengthening



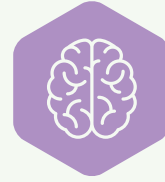
Pain relief

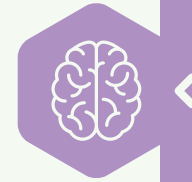


Muscle atrophy prevention and recovery



ReCARE[®] SNA - NEUROLOGY





Treatment protocols:



Smart Diagnosis



Neuromodulation



Neuroplasticity



Functional training



Spasticity



Specific muscle strengthening



ReCARE[®] SNA - VASCULAR



ReCARE[®] SNA - VASCULAR



Treatment protocols:



Peripheral circulation improvement



Muscle strengthening in patients with heart failure



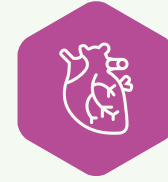
Pre-surgical muscle strengthening



Faster strength recovery after cardiac surgeries



ReCARE[®] SNA - CARDIOLOGY





Treatment protocols:



Peripheral circulation improvement



Muscle strengthening in patients with heart failure



Pre-surgical muscle strengthening

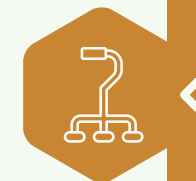


Faster strength recovery after cardiac surgeries



ReCARE[®] SNA - GERIATRICS





Treatment protocols:



Smart Diagnosis



Pain relief



Locomotor muscles strengthening for sarcopenic patients



Preoperative strength training



Muscle atrophy prevention and recovery for frail older adults



Whole body electrostimulation



Peripheral circulation improvement



Locomotor muscles strengthening



Reduction in the incidence of pressure ulcers for bedridden elderly



Functional training

ReCARE[®] SNA - ONCOLOGY



ReCARE[®] SNA - ONCOLOGY



Treatment protocols:



Pain relief



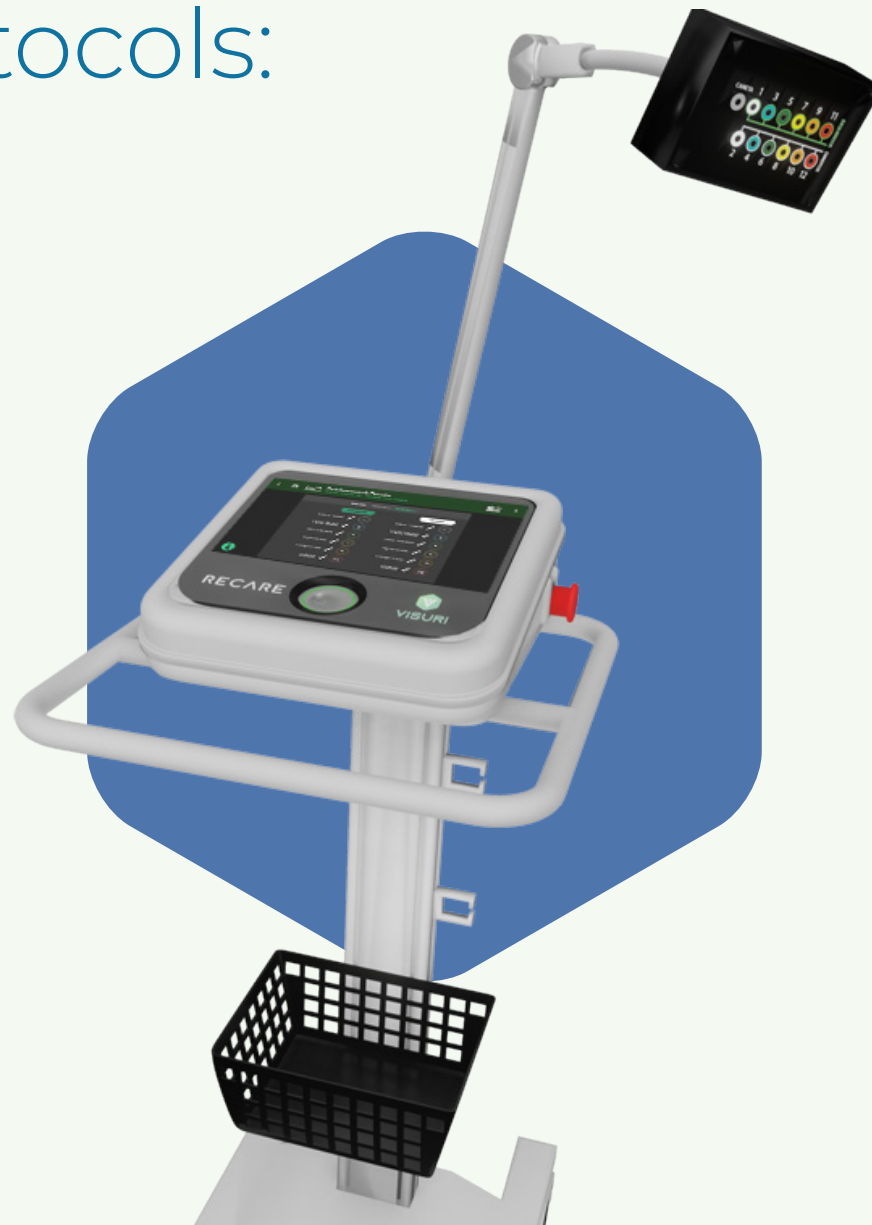
Lymphatic Drainage/Lymphedema



Nausea control



Peripheral circulation improvement



ReCARE[®] SNA - ORTHOPEDICS





Treatment protocols:



Smart diagnosis



Immediate postoperative in joint movement restrictions with isometric contractions



Prevention and recovery of atrophies in pre and post-surgery



Specific muscle strengthening



Muscle strengthening pre and post-surgery



Chain muscle strengthening (joint protection)



ReCARE[®] SNA - PULMONOLOGY



ReCARE[®] SNA - PULMONOLOGY



Treatment protocols:



Strengthening of muscles involved in respiratory mechanics

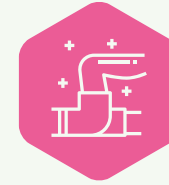


Expiratory muscles strengthening



Reduction of Mechanical Ventilation time







Treatment protocols:



Smart diagnosis



Specific muscle strengthening



Pain relief



Post workout muscle recovery



Full body strengthening





ReCARE[®] SNA - GASTROENTEROLOGY

Treatment protocols:



Nausea control



Constipation regulation







Treatment protocol:



Metabolic demand increase through the improvement of absorption of nutrients



ReCARE[®] SNA - SPORTS MEDICINE



ReCARE[®] SNA - SPORTS MEDICINE



Treatment protocols:



Smart diagnosis



Muscle strengthening



Muscle recovery



ReCARE[®] SNA - PHYSIOTHERAPY





Treatment protocols:



Smart diagnosis



Specific muscle strengthening



Pain relief



Post workout muscle recovery



Full body strengthening



ReCARE[®] SNA - NURSING CARE



ReCARE[®] SNA - NURSING CARE



Treatment protocols:



Pressure injury prevention



Pressure injury treatment



ReCARE[®] SNA - HOME CARE





Treatment protocols:



Smart Diagnosis



Locomotor muscles strengthening



Respiratory and diaphragmatic muscles strengthening



Prevention and recovery of muscle atrophies



Peripheral circulation improvement



Pressure ulcers' incidence reducing



Pain relief



CONTINUING MEDICAL EDUCATION

Visuri Medical Education Department: a unique opportunity to experience innovation!

Medical updating is one of the main tools for every healthcare professional committed to providing the best care for their patients.

This premise is in the foundations of Visuri 's Medical Education Department. We believe this is an essential pillar to maximize the probability of success in all medical procedures involving our technologies and sharing knowledge with specialists around the world.

Scientific Events

We promote and participate in national and international scientific events of excellence, in which renowned health professionals expose clinical cases, technical innovations and medical advances.

Recare Institute

The first online learning platform on Neuromuscular Electrical Stimulation!



Restricted area

Online platform with scientific articles from different areas of medicine.



SIS – Scientific Information Service

Direct and exclusive channel between the medical community and Visuri's scientific area for clarifications and technical discussions on topics involving diagnosis and therapies with NMES.





For more than a decade,
we have developed
partnerships with medical
institutions, universities
and medical societies to
carry out our medical
education program.

TECHNICAL SPECIFICATIONS

Voltage (bivolt)	127 220 VAC
Gross weight:	25Kg (trolley version) and 5 kg (portable version)
Dimensions:	165 cm total height and 113 cm cart height x 42 cm cart base
Color:	White
Anvisa Registration:	MS 80832470005
Frequency:	50 60 Hz
Screen:	Touch screen
IoT:	Data synchronization via Wi-Fi
Output:	Ethernet Connector
Power:	Stimulus Amplitude: from 0 m to 240 mA Pulse Width: from 10us to 10,000us Frequency: from 1 Hz to 100 Hz. Stimulus electrodiagnosis (SE) Measurements of chronaxies up to 65,000 us and rheobase and accommodation up to 200 mA.





For more information,
contact our customer service:



Whatsapp
+55 31 9715-8441



Phone
+55 31 3498-3114



Email
atendimento@visuri.com.br

Administrative office 1

**Belo Horizonte: R. Marília de Dirceu, 199 - 10º andar
Lourdes, Belo Horizonte - MG, 30170-090**

Administrative office 2

**São Paulo Capital: Av. Paulista, 2064 - 14º andar
Bela Vista, São Paulo - SP, 01310-928**

Factory unit

**R. Joaquim Dias Drumond, 100 - Henrique Nery
Sete Lagoas - MG, 35700-333**



HEALTH IS OUR BIGGEST STIMULUS.





